

GRIFCO®

Get serious. Get a Grifco.



**commercial
& industrial door
automation
solutions**

SPECIFICATION GUIDE

■ To Our Valued Partners

Welcome to the new Grifco specification guide from Chamberlain. This guide has been designed to provide all the information you need to select and specify the right industrial or commercial automation solution for your project.

For soft copy versions of drawings, data sheets and "How To Specify" guides please visit the specification centre on our website:

<http://grifco.com.au/welcome-to-specifier-centre>

■ Why Specify Grifco?

As the manufacturer of Australia and New Zealand's most comprehensive range of industrial and commercial door openers, we are determined to build on our established reputation as an industry leader.

Grifco is a brand you can trust – it's part of the Chamberlain Group, the world's largest manufacturer of residential and commercial openers.

Product innovation

Grifco leads the industry in product innovation and quality. Our ongoing commitment to excellence in every aspect of what we do has positioned the brand for sustained profitable growth and future success.

A preoccupation with quality

Not only applies to manufacturing, but we insist on high performance standards throughout every aspect of our business: Sales, Marketing, Marketing Communications, Customer Service, Research and Design, Manufacturing, Finance, HR, Engineering and Technical Support Services.

Chamberlain's Quality Policy

Grifco's mission is to exceed the expectations of its customers by providing exceptional products and services. We put quality at the forefront of everything we do, understanding that each and every employee is accountable and committed to continually improving the effectiveness of our Quality Management Systems and achieving our quality objectives.

Your local experts

Grifco branded products are sold in Australia, New Zealand, and throughout the Oceania region. Grifco has been operating and manufacturing in Australia for over 90 years.

With history, innovation, expertise, brand and service levels unmatched in this marketplace, Don't risk your reputation with imitators and copycats.

Get serious. Get a Grifco.



eDrive Openers (Electronic)

The Grifco eDrive range takes the proven mechanical qualities from our long history of manufacturing industrial and commercial openers, and adds extensive functionality and safety through electronics. eDrive Electronic Openers provide many additional benefits over traditional Mechanical Openers, including:

- Absolute position encoder ensures reliable limit performance throughout the life of the opener
- Push button set limits from the Controller (no need to access limits at the opener)
- Push button set door direction (polarity reversal)
- 3 limit positions standard with every opener
- Upgrade to remote control on all eDrive Electronic Openers without the need for full "logic control"
- Door direction detection (prevents reverse rolling of door in the event of polarity being changed)
- Rapid response load detection

- All openers can be expanded to cover virtually every industry specified operational requirement
- Controllers and most accessories simply 'plug-in'
- Gearbox and motor have cooling fins for improved heat dissipation, greater efficiency and less wear
- 3 independent safety (Beams and/or Edge) inputs with auto-reverse functionality

Each eDrive Opener comes complete with the following items:

- Main control board fitted to the opener
- Push button Controller C10A (low voltage)
- 6m of cable for Controller connection to main board (plug-in)
- Mounting bolts
- ACEM (Automatic Chain Engage Mechanism)
- Installation & user instructions

mDrive Openers (Mechanical)

Features of the Mechanical Openers are:

- Traditional mechanical limit switch
- Robust gearbox with ACEM (patented Automatic Chain Engage Mechanism) device

- Gearbox and motor have cooling fins for improved heat dissipation, greater efficiency and less wear
- A full range of Reversing Starters (sold separately)

Standard Roller Shutters

All of the openers in this specification guide have a recommended maximum door area listed in the relevant specification table.

All recommended door sizes are based on a "standard roller shutter" (refer to right):

- The shutter is correctly spring balanced
- The shutter has $\leq 1.0\text{mm} \times \geq 100\text{mm}$ slats
- The shutter has no wind-locks
- $A \geq 4:1$ sprocket ratio is used
- $\varnothing 150\text{mm}$ drum $\leq 36\text{m}^2$ and $\varnothing 200\text{mm}$ up to 50m^2

Non Standard Roller Shutters

If the roller shutter you are automating varies in general specification from the "standard roller shutter" assumptions made above, please contact our Grifco technical support team for guidance.

Grifco Commercial Door Opener Duty Cycle Definitions

Grifco offers openers with differing duty cycle (operational) ratings to ensure we are able to provide the most efficient and cost effective match for your industrial and commercial door automation requirements.

Low Cycle

Low cycle rated products are rated for approx 10% duty and are suitable for more than 80% of applications.

Low Cycle means;

- 10% run time per hour or
- Approximately 6 minutes operation per hour or
- Approximately 6 open/close cycles per hour

High Cycle

High cycle rated products are rated for approx 30% duty and are suited to high volume warehouses, car parks and emergency services applications.

High Cycle means;

- 30% run time per hour or
- Approximately 20 minutes operation per hour or
- Approximately 20 open/close cycles per hour

Grifco Selection Guide

Door Type	Door Size	Recommended Opener	Description
Light Industrial (continuous sheet) Roller Door	Up to 25m ²	MRC950EVO	12V DC Light Commercial Opener with Soft Start/Stop and Remote Control
		RKML Series	0.5 Hp Low Cycle eDrive Electronic Opener
	Up to 26m ²	RKML Series	0.5 Hp Low Cycle eDrive Electronic Opener
Roller Shutter Doors	Up to 18m ²	eDrive	0.5 Hp Low Cycle eDrive Electronic Opener
		mDrive	0.5 Hp Low Cycle mDrive Mechanical Opener
	Up to 30m ²	eDrive	1.0Hp High Cycle eDrive Electronic Opener
		mDrive	1.0Hp High Cycle mDrive Mechanical Opener
	Up to 36m ²	eDrive	1.0Hp Low Cycle eDrive Electronic Opener
		mDrive	1.0Hp Low Cycle mDrive Mechanical Opener
		MH103M8	1.0Hp, 3Ph High Cycle Heavy Duty Opener (IP50)
	Up to 40m ²	MH103MB	1.0Hp, 3Ph High Cycle Heavy Duty with Solenoid Brake Opener (IP50)
		Mech HD	1.5Hp, 1Ph HD High Cycle Mechanical Opener
	Up to 50m ²	eDrive	1.5Hp Low Cycle eDrive Electronic Opener
		mDrive	1.5Hp Low Cycle mDrive Mechanical Opener
		Mech HD	1.5Hp, 1Ph HD High Cycle Mechanical Opener
	Up to 65m ²	Mech HD	2.0Hp, 1Ph HD High Cycle Mechanical Opener
	80m ² Spring Balanced	Mech HD	2.0Hp, 3Ph HD High Cycle Mechanical Opener
	80m ² Non Spring Balanced	Mech HD	3.0Hp, 3Ph HD High Cycle Mechanical Opener
	100m ² Spring Balanced	Mech HD	3.0Hp, 3Ph HD High Cycle Mechanical Opener
	100m ² Non Spring Balanced	Mech HD	4.0Hp, 3Ph HD High Cycle Mechanical Opener
120m ² Spring Balanced	Mech HD	4.0Hp, 3Ph HD High Cycle Mechanical Opener	
120m ² Non Spring Balanced	Mech HD	5.0Hp, 3Ph HD High Cycle Mechanical Opener	
150m ² Spring Balanced	Mech HD	5.0Hp, 3Ph HD High Cycle Mechanical Opener	
Commercial Sectional Doors	Up to 25m ²	58004P	0.5Hp, 1Ph Low Cycle Mechanical Sectional Opener
	Up to 25m ²	58003P	0.5Hp, 3Ph Low Cycle Mechanical Sectional Opener
	Up to 32m ²	58006P	1.0Hp, 1Ph Low Cycle Mechanical Sectional Opener
	Up to 35m ²	58001P	1.0Hp, 3Ph Low Cycle Mechanical Sectional Opener
	Up to 35m ²	58015P	1.0Hp, 3Ph High Cycle Mechanical Sectional Opener
Fire Doors	Up to 16m ²	HDHWFF	Auto Decent Manual Fire Shutter Hoist
	Up to 16m ²	HDHWFFH	Auto Decent Manual Fire Shutter Hoist+Holding Magnet
	Up to 28m ²	58016F	1.0Hp, 1Ph Low Cycle Auto Decent Fire Shutter Opener
	Up to 28m ²	58001F	1.0Hp, 3Ph Low Cycle Auto Decent Fire Shutter Opener
	Up to 28m ²	58015F	1.0Hp, 3Ph High Cycle Auto Decent Fire Shutter Opener
	Up to 36m ²	58017F	1.5Hp, 3Ph Low Cycle Auto Decent Fire Shutter Opener
Openers for Hazardous Locations	Up to 36m ²	MH103MD	1.0Hp, 3Ph High Cycle Dust Ignition Proof Opener (IP66)
	Up to 36m ²	MH103MF	1.0Hp, 3Ph High Cycle Flame Proof EXD Opener
	Up to 50m ²	75007	1.5Hp, 3Ph High Cycle Dust Ignition Proof Opener (IP66)
	Up to 50m ²	75055	1.5Hp, 3Ph High Cycle Water Proof Opener (IP55)
	Up to 80m ²	75065	2.0Hp, 3Ph High Cycle Water Proof Opener (IP55)
	Up to 80m ²	75066	2.0Hp, 3Ph High Cycle Hose Proof Opener (IP56)
	Up to 80m ²	75018	2.0Hp, 3Ph High Cycle Flameproof EXD Opener

■ Things to Note:

Most openers (with the exception of our Sectional Door Opener Range and MRC950 Light Commercial Door Opener) are Left or Right hand specific. When specifying please specify an "L" or an "R" at the end of these part numbers. Opener handing is determined by the mounting position of the opener when standing on the inside of the building looking out. For example, if an ML4103 unit is required in left hand configuration, then order a ML4103L.

When specifying our Sectional Door Opener range and MRC950 Light Commercial Door Openers you do not need to specify an "L" or an "R" at the end of the part number.

The following chart will assist with identifying the appropriate opener for your door.

kW	Motor power in kilowatts
Amps	Full load amperage rating
Hp	Motor power in horse power
Volts	Voltage
Phase	Three Phase or Single Phase
Size*	Maximum door size capacity *
IP	Index of Protection
Duty	Duty Cycle - High Cycle (HC) or Low Cycle (LC)

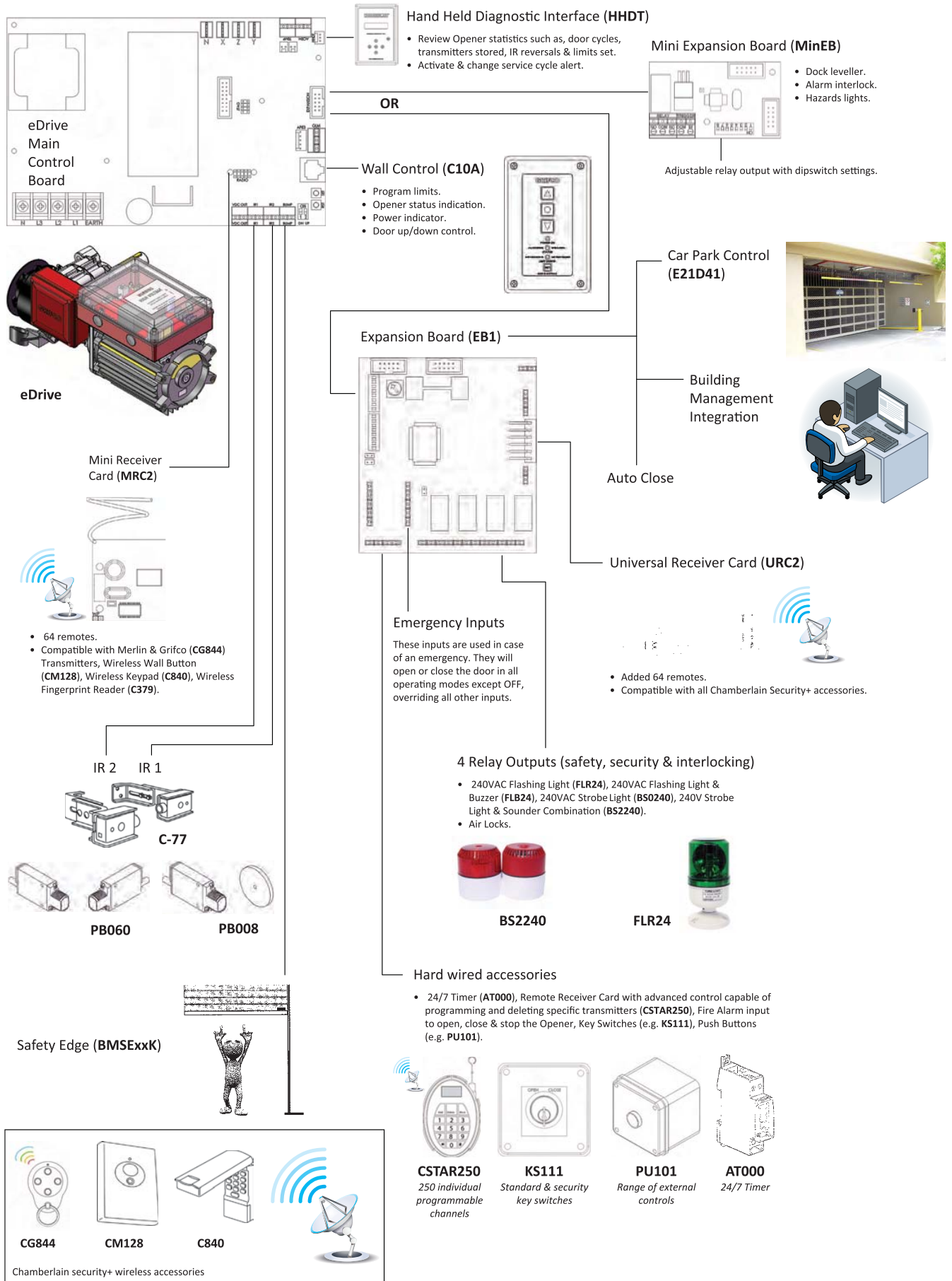
* Based on a "standard shutter" as detailed on page 2

■ Consultancy

For technical assistance or application advice please call
1800 GRIFCO (1800 474 326)

Options (for all options & Acc see product page)	Page
DC Battery Back Up	22
Elite Logic & Remote	7
Elite Logic & Remote	7
Elite Logic & Remote	9
Controllers & Logic	11
Elite Logic & Remote	9
Controllers & Logic	11
Elite Logic & Remote	9
Controllers & Logic	11
Controllers & Logic	11
Controllers & Logic	11
Controllers & Logic	15
Elite Logic & Remote	9
Controllers & Logic	11
Controllers & Logic	15
Controllers & Logic	15
Controllers & Logic	15
Controllers & Logic	17
Controllers & Logic	17
Controllers & Logic	17
Controllers & Logic	17
Controllers & Logic	17
Controllers & Logic	17
Controllers & Logic	17
Controllers, Logics & sectional door transmission equipment	13
	13
	13
	13
	13
N/A	20
N/A	20
Controllers & Logics	19
	19
	19
	19
DIP Controller	11
EXD Controller	11
DIP Controller	15
Water Proof Controller	15
Water Proof Controller	15
Hose Proof Controller	15
EXD Controller	15

Interconnectivity



Contents

Why Specify Grifco?	01
Grifco Selection Guide	03
Interconnectivity	05
Grifco eDrive - Openers for Light Industrial Roller Doors	07
Grifco eDrive - Premium Openers for Industrial Roller Shutter Doors	09
Grifco mDrive - Proven Openers for Standard Industrial Roller Shutter Doors	11
Grifco Openers for Commercial Sectional Doors	13
Grifco Heavy Duty Openers for Large & High Use Roller Shutter Doors	15
Grifco Extra Heavy Duty Openers for Very Large Roller Shutter Doors	17
Grifco Specialised Openers for Fire Shutter Doors	19
Manual Hoists for Light Industrial Roller Doors & Roller Shutter Doors	21
Merlin MRC950EVO - Openers for Light Industrial Roller Doors	22
Installation Accessories	23
Transmission Equipment	23
Battery Back-up	24
Remote Controls	24
Receivers	24
Logic Upgrades	25
Safety Beams	25



RKML

Specifications

	RML4053	RML4051	RKML4053	RKML4051	RKML4053EF	RKML4051EF
kW	0.37	0.37	0.37	0.37	0.37	0.37
Amps	1.55	3.4	1.55	3.4	1.55	3.4
Hp	0.5	0.5	0.5	0.5	0.5	0.5
Volts	415	240	415	240	415	240
Phase	3	1	3	1	3	1
Size*	26	26	26	26	26	26
IP	44	44	44	44	44	44
Duty	LC	LC	LC	LC	LC	LC
Included						
C10A Control	✓	✓	✓	✓	✓	✓
240V Pre-Wired	-	✓	-	✓	-	✓
Installation Kit	-	-	✓	✓	✓	✓
Upgrades						
Remote - CGK844 + PB008	U	U	U	U	U	U
Logic "Elite" - E21D41	U	U	U	U	U	U
Options						
Waterproof Clutch (IP55)	O	O	O	O	O	O
Clutch	O	O	O	O	O	O
No Neutral	O	-	O	-	O	-
Pre-Wired	O	-	O	-	O	-

✓ = Included - U = Upgrade Available - O = Option Available

* Size refers to the maximum roller door size in sqm.
Light commercial openers are not recommended for roller shutters.

Grifco eDrive Light Industrial Door Openers Key Features

- Designed for spring balanced continuous sheet roller doors & grilles up to 26m²
- Available in 240v single phase (standard pre-wired) or 415v three phase variants
- Low Voltage programmable, multi-function wall control with accessory connection capability
- Powerful and reliable 0.5Hp AC induction motor
- Proven, robust self-locking gear reduction system
- Revolutionary ACEM – Automatic Chain Engage Mechanism, with ACEM detect for user safety – allows safe manual operation in the event of a power failure
- Advanced universal Main Control Board, featuring;
 - A range of plug in expansion boards for interconnectivity
 - Mechanically interlocked contactors for safety & reliability
 - Advanced diagnostic capability provides operational information
 - Auto-learn for Chamberlain monitored IR Beams
 - Push button limit set from ground level, simple & safe
 - Three limit positions allows for preset mid position opening
 - Adjustable door behaviour configuration for varying applications
- Reliable, proven APE – Absolute Positioning Encoder – guaranteed door control

How to Specify

How to specify Grifco eDrive – sample standard specification

Light Industrial Door Opener & Controller

Grifco eDrive model RKML4053, three phase 415v, 0.5Hp low cycle rated opener with upper and lower push button set limits and Auto Chain Engage Mechanism, manufactured by Chamberlain Australia.

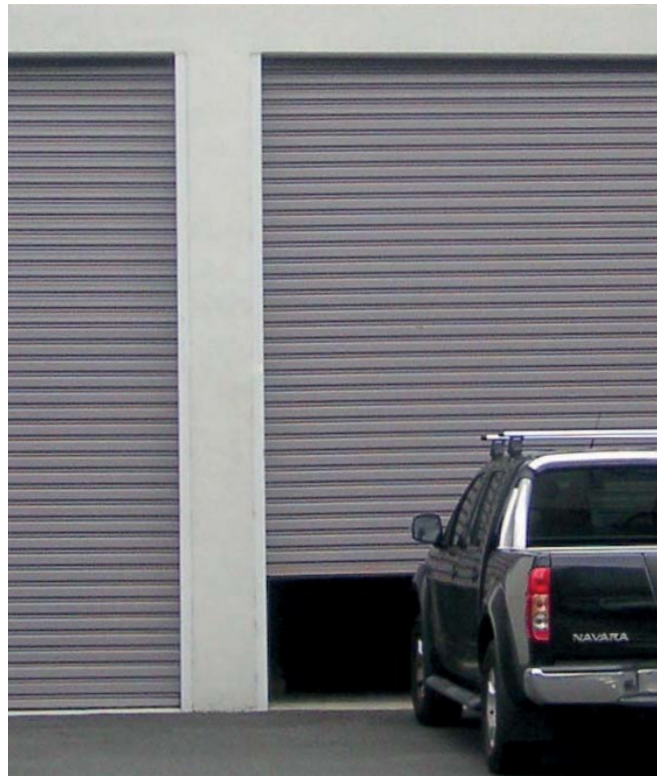
Mounting hardware and Wall control to suit opener (included):

- Mounting plate,
- Output shaft sprocket
- 10B drive chain
- PS200 Drum Sprocket
- Programmable multi-function Grifco C10A wall control (included)

How to specify – Sample Specification incorporating accessories for special door operations

Opener to be supplied with the following accessories for access control:

- Elite Logic Control Kit, Grifco E21D41 with low voltage control circuit and configured functionality as detailed below
 - Controller to be encased in a robust plastic enclosure with external auto/off/manual key switch, included in E21D41 kit
 - 433Mhz high security remote control transmitters (two included in E21D41 kit)
 - Hard wired photo-electric beams (Grifco PB008 IP67) of the reflector type mounted adjacent to the shutter opening 600mm above the floor level and within 100mm of the door opening – included in E21D41 kit.
- Door Behaviour Example
 - Open or close by remote control transmitter from vehicles or wall control. No Auto Close to be set, doors to remain open until closed via remote or wall control. Warning lights must activate whilst door is in motion. Door will not operate when photo beam is broken by a vehicle or other obstruction.



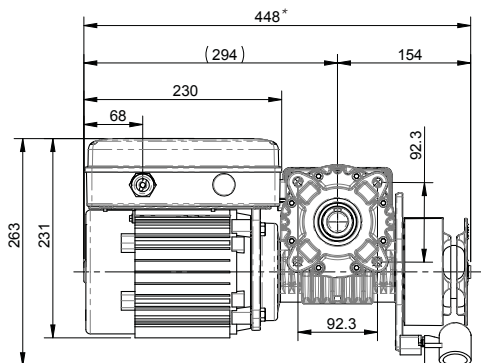
Why specify Grifco eDrive Light Industrial Rolling Door Openers?

Grifco eDrive light industrial rolling door openers are designed, engineered & manufactured in Australia by Chamberlain Australia. They feature Grifco's superior engineering know-how and deliver proven reliability & durability.

Additional Features

Key Options & Accessories

- Pre-wired three phase for ease of installation and maintenance
- Mechanical clutch for Bi-fold door applications
- Security key operation
- Remote upgrades – up to 500 users (requires logic upgrade)
- A complete range of safety options
- Building Management System integration capability
- Waterproof to IP55
- IR Beam and Door Leading Edge safety protection systems with automatic safety reverse
- Mounting hardware & transmission accessories
- Single phase and three phase battery back- up options



* For single phase add 55mm to overall length

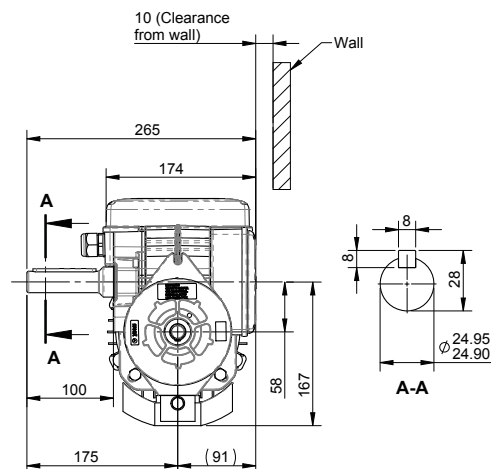
Suitable for

RKML4051 & RKML4051EF

- for light industrial roller doors up to 26m²

RKML4053 & RKML4053EF

- for light industrial roller doors up to 26m²





eDrive Model



E21D41

Specifications

	ML-4053	ML-4103	ML-4153	MH4103	ML-4051	ML-4102	MH4102
kW	0.37	0.75	1.1	0.75	0.37	0.75	0.75
Amps	1.55	2.3	2.55	1.95	3.4	6.0	4.35
Hp	0.5	1.0	1.5	1.0	0.5	1.0	1.0
Volts	415	415	415	415	240	240	240
Phase	3	3	3	3	1	1	1
Size*	18	36	50	30	18	36	30
IP	44	44	44	44	44	44	44
Duty	LC	LC	LC	HC	LC	LC	HC
Included							
C10A Control	✓	✓	✓	✓	✓	✓	✓
Upgrades							
Remote - CGK844 + PB008	U	U	U	U	U	U	U
Logic "Elite" - E21D41	U	U	U	U	U	U	U
Options							
Waterproof (IP55)	O	O	O	O	O	O	O
Clutch	O	O	O	O	O	O	O
No Neutral	O	O	O	O	-	-	-
Pre-Wired	O	O	O	O	✓	✓	✓

✓ = Included - U = Upgrade Available - O = Option Available

* Size refers to the maximum roller door size in sqm.

Grifco eDrive Key Features

- Designed for spring balanced roller shutter doors & grilles up to 50m²
- Available in 240v single phase or 415v three phase variants
- Low Voltage programmable, multi-function wall control with accessory connection capability
- Powerful, reliable 0.5Hp, 1.0Hp & 1.5Hp options
- Proven, robust self-locking gear reduction system
- Revolutionary ACEM – Automatic Chain Engage Mechanism, with ACEM detect for user safety – allows safe manual operation in the event of a power failure
- Advanced universal Main Control Board, featuring;
 - A range of plug in expansion boards for interconnectivity
 - Mechanically interlocked contactors for safety & reliability
 - Advanced diagnostic capability provides operational information
 - Auto-learn for Chamberlain monitored IR Beams
 - Push button limit set from ground level, simple & safe
 - Three limit positions allows for preset mid position opening
 - Adjustable door behaviour configuration for varying applications
- Reliable, proven APE – Absolute Positioning Encoder – guaranteed door control

How to Specify

How to specify Grifco eDrive – sample standard specification Roller Shutter Opener & Controller

Grifco eDrive model ML4103, three phase 415v, 1.0Hp low cycle rated opener with upper and lower push button set limits and Auto Chain Engage Mechanism, manufactured by Chamberlain Australia.

Mounting hardware and Wall control to suit opener:

- Grifco SK1018 (Mounting plate, Output shaft sprocket, 10B drive chain, Hand hauling chain)
- Programmable multi-function Grifco C10A wall control (included)

How to specify – sample specification incorporating accessories for carpark or special door operations

Opener to be upgraded to high cycle motor (MH series)

Opener to be supplied with the following accessories for vehicular access control:

- Elite Logic Control Kit, Grifco E21D41 with low voltage control circuit and configured functionality as detailed below
 - Controller to be encased in a metal enclosure with external auto/off/manual key switch, included in E21D41 kit
 - 433Mhz high security remote control transmitters (two included in E21D41 kit)
 - Hard wired photo-electric beams (Grifco PB008 IP67) of the reflector type mounted adjacent to the shutter opening 600mm above the floor level and within 100mm of the door opening – included in E21D41 kit.
- Door Behaviour Example
 - Open or close by remote control transmitter from vehicles or wall control. No Auto Close to be set, doors to remain open until closed via remote or wall control. Warning lights must activate whilst door is in motion. Door will not operate when photo beam is broken by a vehicle or other obstruction.

Why specify Grifco eDrive Industrial Roller Shutter Door Openers?

Grifco eDrive Industrial Roller Shutter Door Openers are designed, engineered & manufactured in Australia by Chamberlain Australia. They feature Grifco's superior engineering know-how and deliver proven reliability & durability.

Additional Features

Key Options & Accessories

- Pre-wired three phase for ease of installation and maintenance
- Mechanical clutch for Bi-fold door applications
- Security key operation
- Remote upgrades – up to 500 users
- A complete range of safety options
- Building Management System integration capability
- Waterproof to IP55
- IR Beam and Door Leading Edge safety protection systems with automatic safety reverse
- Mounting hardware & transmission accessories
- Single phase and three phase battery back- up options



Suitable for

ML4153

- for standard roller shutters up to 50m²

ML4102 & ML4103

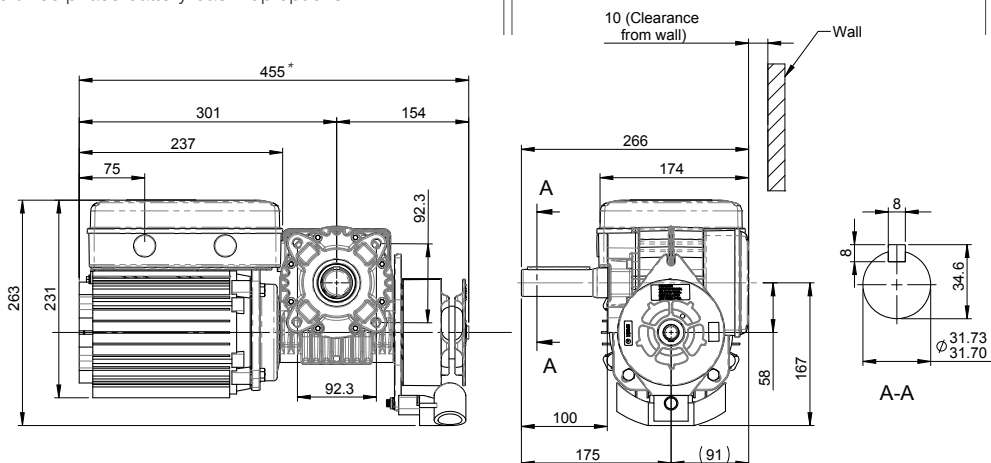
- for standard roller shutters up to 36m²

MH4102 & MH4103

- for high cycle roller shutters up to 30m²

ML4053 & ML4051

- for standard roller shutters up to 18m²



* For single phase add 55mm to overall length



mDrive Model



Logic Upgrades

Specifications

	ML053M	ML103M	ML153M	MH103M	ML051M	ML102M	MH102M	MH103M8
kW	0.37	0.75	1.1	0.75	0.37	0.75	0.75	0.75
Amps	1.55	2.3	2.55	1.95	3.4	6.0	4.35	1.95
Hp	0.5	1.0	1.5	1.0	0.5	1.0	1.0	1.0
Volts	415	415	415	415	240	240	240	415
Phase	3	3	3	3	1	1	1	3
Size*	18	36	50	30	18	36	30	36
IP	44	44	44	44	44	44	44	50
Duty	LC	LC	LC	HC	LC	LC	HC	HC
Control (not included)								
	RB374-LB3E006	RB374-LB3E007	RB374-LB3E008	RB374-LB3E007	RB375-LB1E008	RB376-LB1E009	RB376-LB1E009	RB374-LB3E007
Logic Upgrades								
	GLM-L053MK	GLMH-103MK	GLMH-153MK	GLMH-103MK	GLM-L051MK	GLMH-102MK	GLMH-102MK	GLMH-103MK
Options								
Waterproof (IP55)	O	O	O	O	O	O	O	O
Clutch	O	O	O	O	O	O	O	O
No Neutral	O	O	O	O	-	-	-	O
Dust Ignition Proof	-	-	-	-	-	-	-	O**
Flame Proof	-	-	-	-	-	-	-	O**
D80 Flange (IP50)	-	-	-	-	-	-	-	✓
Solenoid Brake (IP50)	-	-	-	-	-	-	-	O

* Size refers to the maximum roller door size in sqm. - O = Option Available ✓ = Included
 ** DIP and Flame Proof require DIP and Flame Proof Reversing Starters

Grifco mDrive Key Features

- Designed for spring balanced roller shutter doors & grilles up to 50m²
- Available in 240v single phase or 415v three phase variants
- Time-proven wall mounted Reversing Starter with integrated overload protection
- Powerful, reliable 0.5Hp, 1.0Hp & 1.5Hp options
- Proven, robust self-locking gear reduction system
- Revolutionary ACEM – Automatic Chain Engage Mechanism, allows safe manual operation in the event of a power failure
- Reliable mechanical limit system

How to Specify

How to specify Grifco mDrive – sample standard specification

Roller Shutter Opener & Controller

Grifco mDrive model ML103M, three phase 415v, 1.0Hp low cycle rated opener with mechanical limits and Auto Chain Engage Mechanism, manufactured by Chamberlain Australia.

Mounting hardware to suit opener:

- Grifco SK1018 (Mounting plate, Output shaft sprocket, 10B drive chain, Hand hauling chain)

Wall control to be Grifco RB374-LB3E007 Reversing Starter.

How to specify – sample specification for carpark or special door operations

Opener to be upgraded to high cycle motor (MH series)

Opener to be supplied with the following accessories for vehicular access control:

- Grifco Multi Mode Mechanical Logic Control Kit, Grifco GLMH103MK, and configured functionality as detailed below:
 - Controller to be encased in a metal enclosure with external auto/off/manual key switch, included in GLMH103MK kit
 - 433Mhz high security remote control transmitters (two included in GLMH103MK kit)
 - Hard wired photo-electric beams (Grifco PB008 IP67) of the reflector type mounted adjacent to the shutter opening 600mm above the floor level and within 100mm of the door opening – included in GLMH103MK kit.
- Door Behaviour Example
 - Open or close by remote control transmitter from vehicles or wall control. No Auto Close to be set, doors to remain open until closed via remote or wall control. Warning lights must activate whilst door is in motion. Door will not operate when photo beam is broken by a vehicle or other obstruction

Why specify Grifco mDrive?

Grifco mDrive Industrial Roller Shutter Door openers are designed, engineered & manufactured in Australia by Chamberlain Australia. They feature Grifco's superior engineering know-how and deliver proven reliability & durability.

Additional Features

Standard Controller (sold separately)

- Time-proven wall mounted Reversing Starter with integrated overload protection

Key Options & Accessories

- Mechanical Logic Upgrades for carpark integration
- Building Management System integration capability (requires logic)
- Mechanical clutch for bi-fold door applications
- Security key operation
- Remote upgrades – up to 500 users (requires logic upgrade)
- Available with Waterproof (IP55), Dust Ignition Proof (DIP IP66), Solenoid Brake (IP50), Flameproof ExD (IP55) options
- A complete range of safety options
- Waterproof (IP55)
- IR beam and door leading edge safety protection systems (requires logic upgrade)
- Mounting hardware & transmission accessories
- Single phase & three phase battery back-up options



Suitable for

ML153M

- for standard roller shutters up to 50m²

ML103M, MH103M8, MH103MB, MH103MD, MH103MF & ML102M

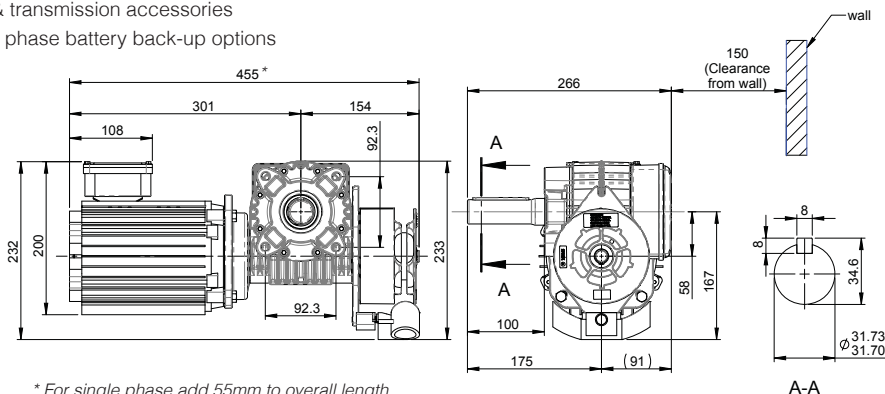
- for standard roller shutters up to 36m²

MH102M & MH103M

- for standard roller shutters up to 30m²

ML053M & ML051M

- for standard roller shutters up to 18m²



* For single phase add 55mm to overall length



Model No. 58004P



Logic Upgrade

Specifications

	58003P	58015P	58001P	58004P	58006P
kW	0.37	0.75	0.75	0.37	0.75
Amps	1.55	1.95	1.95	3.4	6.0
Hp	0.5	1.0	1.0	0.5	1.0
Volts	415	415	415	240	240
Phase	3	3	3	1	1
Size*	25	35	35	25	32
IP	44	44	44	44	44
Duty	LC	HC	LC	LC	LC
Control (not included)					
	RB374-LB3E006	RB374-LB3E007	RB374-LB3E007	RB375-LB1E008	RB376-LB1E009
Logic Upgrades					
	GLM-L053MK	GLM-H103MK	GLM-H103MK	GLM-L051MK	GLM-H102MK
Included					
Carriage	✓	✓	✓	✓	✓
Push Arm + Track End Idler	✓	✓	✓	✓	✓

Does not include Control, Track or Chain

* Size refers to the maximum sectional door size in sqm.

Sectional Opener Spares / Accessories

Part No.	Description
PANCAR	Sectional Carriage
PANPA	Sectional Push Arm
PANIDL	Track Support Idler
PANSPR	Sectional Output Shaft Sprocket
PANTRK	Sectional Track (per m)
PANCHN	Sectional Chain (7.5m)

Grifco Sectional Door Opener Key Features

- Designed for commercial sectional doors up to 35m²
- Available in 240v single phase or 415v three phase variants
- Powerful, reliable 0.5Hp & 1.0Hp options
- Reliable mechanical limit system
- Safety Overload Protection

How to Specify

How to specify Grifco Sectional Door Openers – sample standard specification

Sectional Door Opener & Controller

Grifco Sectional Door Opener model 58001P, three phase 415v, 1.0Hp low cycle rated opener with mechanical limits manufactured by Chamberlain Australia.

Wall control to be Grifco RB374-LB3E007 Reversing Starter.

Mounting hardware to suit opener supplied, Sectional Track and Chain are supplied separately to match varying door heights.

How to specify – sample specification incorporating accessories for carpark or special door operations

Opener to be supplied with the following accessories for vehicular access control:

- Grifco Multi Mode Mechanical Logic Control Kit, Grifco GLMH103MK, and configured functionality as detailed below:
 - Controller to be encased in a metal enclosure with external auto/off/manual key switch, included in GLMH103MK kit
 - 433Mhz high security remote control transmitters (two included in GLMH103MK kit)
 - Hard wired photo-electric beams (Grifco PB008 IP67) of the reflector type mounted adjacent to the shutter opening 600mm above the floor level and within 100mm of the door opening – included in GLMH103MK kit.
- Door Behaviour example:
 - Open or close by remote control transmitter from vehicles or wall control. Auto Close to be set, door to Automatically close after 15 seconds with no obstruction or be closed via remote or wall control. Warning lights must activate whilst door is in motion. Door will not operate when photo beam is broken by a vehicle or other obstruction.

Why specify Grifco Commercial Sectional Door Openers?

Grifco sectional door openers are designed, engineered & manufactured in Australia by Chamberlain Australia. They feature Grifco's superior engineering know-how and deliver proven reliability & durability.

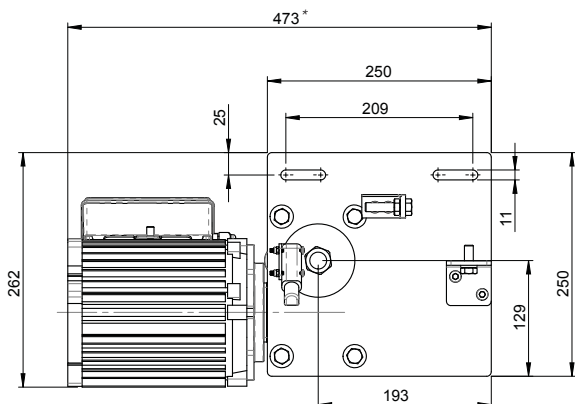
Additional Features

Standard Controller (sold separately)

- Time-proven wall mounted Reversing Starter with integrated overload protection

Key Options & Accessories

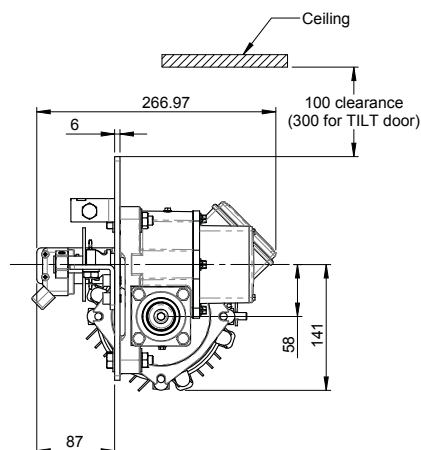
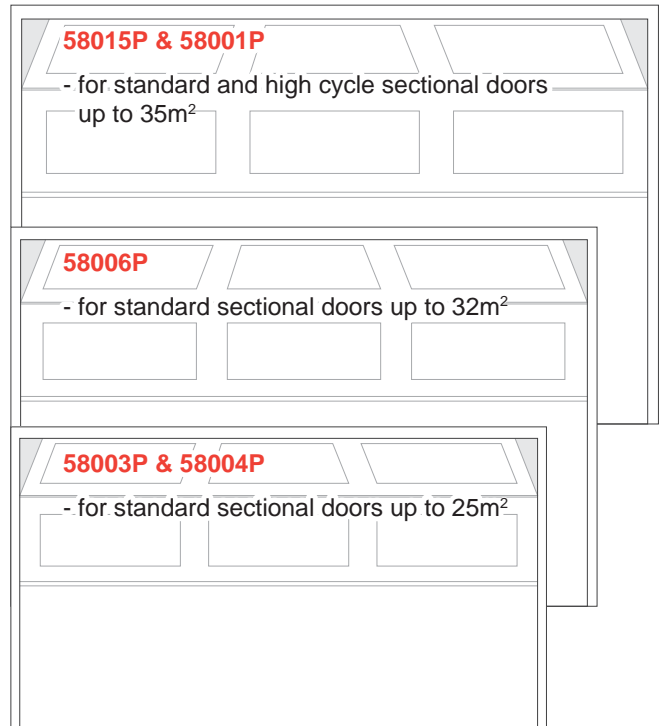
- Mechanical Logic Upgrades for carpark integration
- Building Management System integration capability (requires logic)
- Security key operation
- Remote upgrades – up to 500 users (requires logic upgrade)
- A complete range of safety options
- IR beam safety obstruction protection (requires logic upgrade)
- Mounting hardware & transmission accessories
- Single phase & three phase battery back-up options



* For single phase add 55mm to overall length



Suitable for





Model No. 75003



Logic Upgrade

Specifications

	75003	75004	75001	75012
kW	1.1	1.5	1.1	1.5
Amps	2.6	3.3	6.0	8.4
Hp	1.5	2.0	1.5	2.0
Volts	415	415	240	240
Phase	3	3	1	1
Size*	50	80	40	65
IP	44	44	44	44
Duty	HC	HC	HC	HC
Control (not included)				
	RB374-LB3E008	RB374-LB3E008	RB376-LB1E010	RB376-LB1E012
Logic Upgrades				
	GLM-H153MK	GLM-H203MK	GLM-H152MK	GLM-H202MK
Options				
Dust Proof Ignition (IP66)	75007	-	-	-
Waterproof (IP55)	75055	75065	-	-
Hose Proof (IP56)	-	75066	-	-
Solenoid Brake (IP50)	-	75015	-	-
Flameproof Exd	-	75018	-	-

* Size refers to the maximum shutter door size in sqm.

Grifco Heavy Duty Roller Shutter Door Opener Key Features

- Designed for spring balanced roller shutter doors & grilles up to 80m²
- Available in 240v single phase or 415v three phase variants
- Powerful, reliable 1.5Hp & 2.0Hp options
- Proven, robust self-locking gear reduction system
- Revolutionary ACEM – Automatic Chain Engage Mechanism, allows safe manual operation in the event of a power failure
- Reliable mechanical limit system

Consultancy

Technical assistance or specification advice for all heavy duty roller shutter automation applications please call **1800 GRIFCO**

How to Specify

How to specify Grifco Heavy Duty Industrial Roller Shutter Openers – sample specification

Roller Shutter Opener & Controller

Grifco Heavy Duty Industrial Roller Shutter Opener model 75004, three phase 415v, 2.0Hp high cycle rated opener with mechanical limits and Auto Chain Engage Mechanism, manufactured by Chamberlain Australia.

Mounting hardware to suit application. Wall control to be Grifco RB374-LB3E008 Reversing Starter.

How to specify – sample specification for carpark or special door operations

Opener to be supplied with the following accessories for vehicular access control:

- Grifco Multi Mode Mechanical Logic Control Kit, Grifco GLMH203MK, and configured functionality as detailed below:
 - Controller to be encased in a metal enclosure with external auto/off/manual key switch, included in GLMH203MK kit
 - 433Mhz high security remote control transmitters (two included in GLMH203MK kit)
 - Hard wired photo-electric beams (Grifco PB008 IP67) of the reflector type mounted adjacent to the shutter opening 600mm above the floor level and within 100mm of the door opening – included in GLMH203MK kit.
- Door Behaviour Example
 - Open or close by remote control transmitter from vehicles or wall control. No Auto Close to be set, doors to remain open until closed via remote or wall control. Warning lights must activate whilst door is in motion. Door will not operate when photo beam is broken by a vehicle or other obstruction

Why specify Grifco Heavy Duty Industrial Roller Shutter Openers?

Grifco Heavy Duty Industrial Roller Shutter openers are designed, engineered & manufactured in Australia by Chamberlain Australia. They feature Grifco's superior engineering know-how and deliver proven reliability & durability and have the following features;

Additional Features

Standard Controller (sold separately)

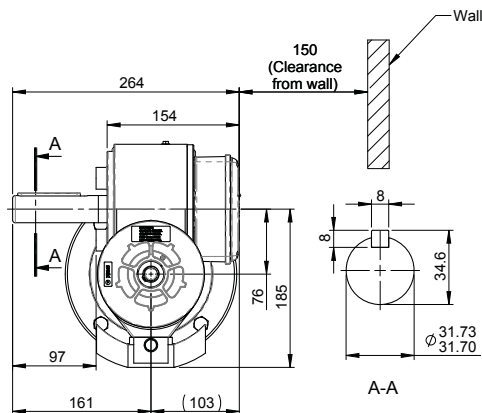
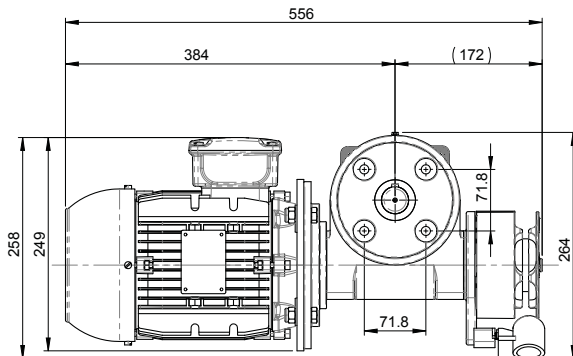
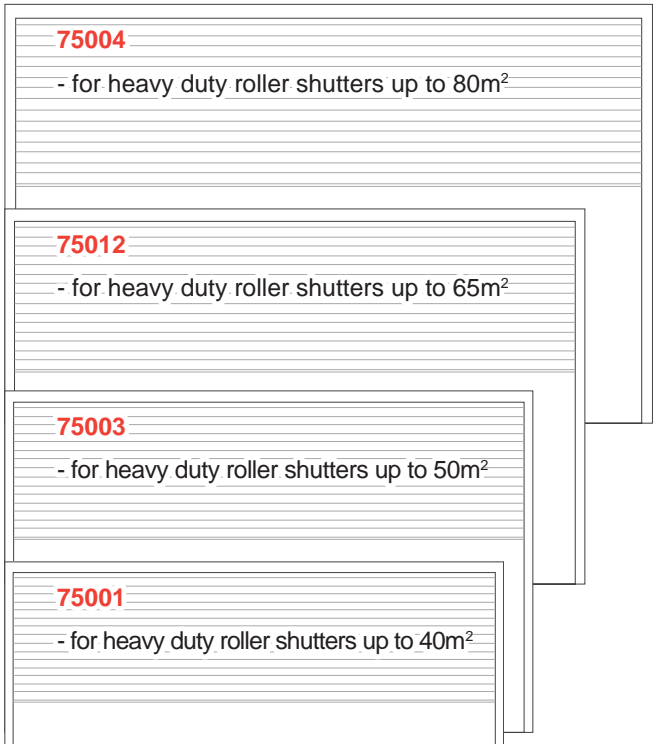
- Time-proven wall mounted Reversing Starter with integrated overload protection

Key Options & Accessories

- Mechanical Logic Upgrades for carpark integration
- Building Management System integration capability (requires logic)
- Security key operation
- Remote upgrades – up to 500 users (requires logic upgrade)
- A complete range of safety options
- Available with Waterproof (IP55), Dust Ignition Proof (DIP IP66), Solenoid Brake (IP50), Flameproof ExD (IP55), Hoseproof (IP66) options
- IR Beam and Door Leading Edge safety protection systems with automatic safety reverse
- Mounting hardware & transmission accessories
- Single phase & Three phase battery back-up options



Suitable for





Model No. 71500



Logic Upgrade

Specifications

Openers for Extra Heavy Duty Shutters



	71500	81500	91500
kW	2.2	3.0	4.0
Amps	4.36	5.88	7.75
hp	3.0	4.0	5.0
Volts	415	415	415
Phase	3	3	3
Spring Balanced Size*	100	120	150
Non Spring Balanced Size*	80	100	120
IP	50	50	50
Duty	HC	HC	HC
Control (not included)			
	RB374-LB3E009	RB374-LB3E010	RB374-LB3E012
Logic Upgrades			
	GLM-H303MK	GLM-H403MK	GLM-H503MK
Options			
Mounting Platform (MP003)	O	O	O

Does not include control or manual chain wheel

* Size refers to the maximum shutter door size in sqm.

Grifco Extra Heavy Duty Roller Shutter Door Opener Key Features

- Designed for spring balanced roller shutter doors & grilles up to 150m²
- Designed for non spring balanced roller shutter doors & grilles up to 120m² (subject to Grifco guidelines)
- Available in 415v 3 phase variants
- Powerful, reliable 3.0, 4.0 & 5.0 Hp options
- Proven, robust self-locking gear reduction system
- Reliable mechanical limit system

Consultancy

Technical assistance or specification advice for all extra heavy duty roller shutter automation applications please call **1800 GRIFCO**

How to Specify

How to specify Grifco Extra Heavy Duty Industrial Roller Shutter Openers (sample specification)

Roller Shutter Opener & Controller

Grifco Extra Heavy Duty Industrial Roller Shutter Door Opener model 71500, three phase 415v, 3.0Hp high cycle rated opener with mechanical limits, manufactured by Chamberlain Australia.

Mounting and transmission hardware to suit application – Grifco technical guidance available.

Wall control to be Grifco RB374-LB3E009 Reversing Starter.

How to specify – sample specification for carpark or special door operations

Opener to be supplied with the following accessories for vehicular access control:

- Grifco Multi Mode Mechanical Logic Control Kit, Grifco GLMH303MK, and configured functionality as detailed below:
 - Controller to be encased in a metal enclosure with external auto/off/manual key switch, included in GLMH303MK kit
 - 433Mhz high security remote control transmitters (two included in GLMH303MK kit)
 - Hard wired photo-electric beams (Grifco PB008 IP67) of the reflector type mounted adjacent to the shutter opening 600mm above the floor level and within 100mm of the door opening – included in GLMH303MK kit.
- Door Behaviour Example
 - Open or close by remote control transmitter from vehicles or wall control. No Auto Close to be set, doors to remain open until closed via remote or wall control. Warning lights must activate whilst door is in motion. Door will not operate when photo beam is broken by a vehicle or other obstruction.

Why specify Grifco Extra Heavy Duty Industrial Roller Shutter Door Openers?

Grifco Extra Heavy Duty Industrial Roller Shutter Openers are designed, engineered & manufactured in Australia by Chamberlain Australia. They feature Grifco's superior engineering know-how and deliver proven reliability & durability and have the following features;

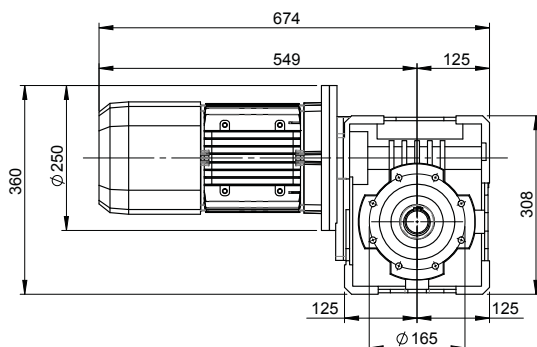
Additional Features

Standard Controller (sold separately)

- Time-proven wall mounted Reversing Starter with integrated overload protection

Key Options & Accessories

- Mechanical Logic Upgrades
- Security key operation
- Remote upgrades – up to 500 users (requires logic upgrade)
- A complete range of safety options
- IR beam and door leading edge safety protection systems (requires logic upgrade)
- Mounting hardware & transmission accessories
- Three phase battery back-up options



Suitable for

91500

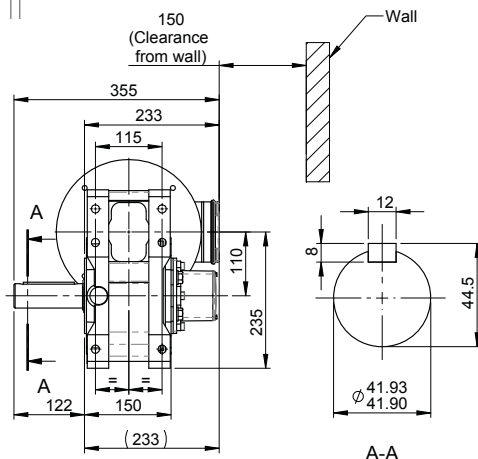
- for spring balanced very large roller shutter doors up to 150m²
- for non spring balanced very large roller shutter doors up to 120m²

81500

- for spring balanced very large roller shutter doors up to 120m²
- for non spring balanced very large roller shutter doors up to 100m²

71500

- for spring balanced very large roller shutter doors up to 100m²
- for non spring balanced very large roller shutter doors up to 80m²





Model No. 58001F



Logic Upgrade

Specifications

	58001F	58015F	58017F	58016F
kW	0.75	0.75	1.1	0.75
Amps	2.3	1.95	2.55	6.0
Hp	1.0	1.0	1.5	1.0
Volts	415	415	415	240
Phase	3	3	3	1
Size*	28	28	36	28
IP	44	44	44	44
Duty	LC	HC	LC	LC
Control (not included)				
	RB374-LB3E007	RB374-LB3E007	RB374-LB3E008	RB376-LB1E009
Logic Upgrades				
	GLM-H103MK	GLM-H103MK	GLM-H153MK	GLM-H102MK
Options				
+ Fusible Link	<input type="checkbox"/>	<input type="checkbox"/>	<input type="checkbox"/>	<input type="checkbox"/>
+ 24VDC Magnet (fitted)	<input type="checkbox"/>	<input type="checkbox"/>	<input type="checkbox"/>	<input type="checkbox"/>

* Size refers to the maximum shutter door size in sqm.

Grifco Auto Descent Fire Shutter Opener Key Features

- Designed for spring balanced rolling fire shutter doors up to 36m²
- Available in 240v single phase or 415v three phase variants
- Powerful, reliable 1.0Hp & 1.5Hp options
- Reliable mechanical limit system
- Revolutionary ACEM – Automatic Chain Engage Mechanism, allows safe manual operation in the event of a power failure
- Independent governed decent control
- Fitted with Fusible Link

Consultancy

Technical assistance or specification advice for fire door applications please call **1800 GRIFCO**



How to Specify

How to specify – sample standard specification

- The Light Industrial Roller Door Opener shall be Merlin MRC950EVO, manufactured by Chamberlain Australia, featuring;
 - Super quiet & powerful 12VDC motor
 - Energy efficient – uses less than 1 watt on standby
 - Chamberlain Security+2 radio frequency technology for increased range and security
 - Adaptive power technology for trouble free operation
 - Two x 3 button keyring transmitters and one premium wireless wall control
 - Soft Start/Stop technology for smooth and quiet door operation
 - Automatic obstruction detection and safety reverse
 - Integrated manual release, with extended disengage rope length for high doors
 - Optional timer to close feature
 - Optional battery back-up
 - 2 year warranty

Why specify Merlin MRC950EVO

The Merlin MRC950EVO opener is designed for heavy domestic and light commercial applications for rolling doors up to 25.0m² with a maximum lifting height of 5.5m.

This powerful roller door opener is locally designed, engineered and manufactured by Chamberlain Australia for lower cycle applications.

MRC950EVO Key Features

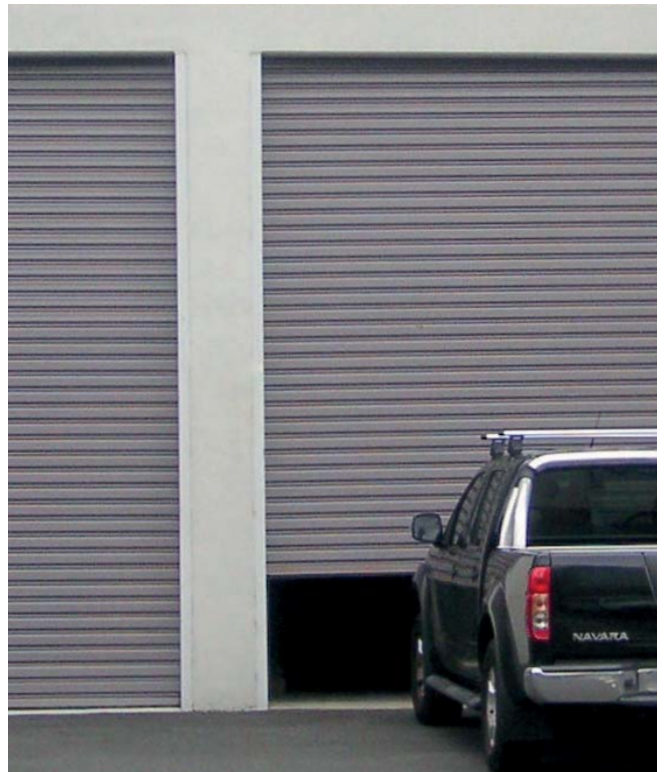
- 12V DC motor with thermal overload protection
- Input voltage: 240V AC
- Rated door area 25m²
- Maximum door height 5.5m
- Pulling force: 1300N
- Minimum side room 45mm
- 433.30, 434.54, 433.92 MHz AM radio with Security+2.0 encrypted rolling code technology.
- Up to 64 memory registers
- Illumination: 12 premium ultrabright LEDs
- Noise Rating IM: 59DB

Part No: MRC950EVO

Light Industrial Roller Door Opener

Comments

- For Light Industrial Roller Doors up to 25m²
- Features: Electronic Limits, Auto Force Reversal, APE Tracking, Soft Start/Stop, Manual Release, Handle Disengage Mechanism and optional E475M Battery Back-up Unit.
- Door Size 25m²
- Duty Cycle (low)
- Control Included

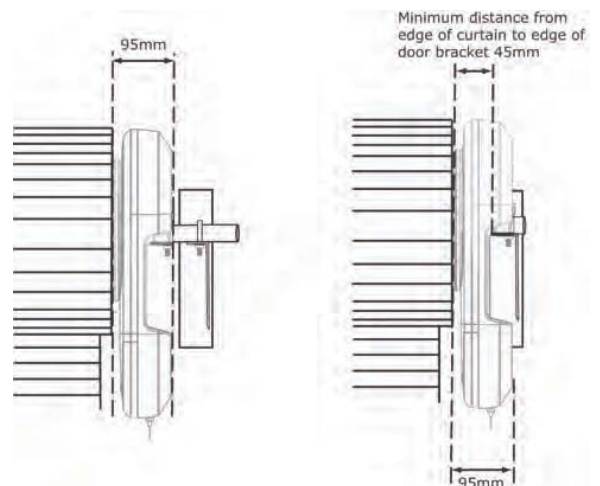


Suitable for

MRC950EVO

- for light industrial roller doors up to 25m²

Side room measurements



■ Installation Accessories

Mounting Plates



Part No: MPM01
Description: Standard Maestro/eDrive gearbox mounting plate only
Comments: Suits eDrive Electronic or mDrive Mechanical gearboxes
See Spare Parts for matching bolt pack: MBM03
A full range of mounting hardware is available



Part No: IBMK
Description: In-board mounting kit for Maestro/eDrive Gearbox
Comments: Used for in-board mounting

Mounting Kits



Part No: SK1018
Description: Mounting Plate, S1014 shaft sprocket & 10B drive + 8m hauling chain
Comments: Mounting plate is universal mount for vertical or horizontal fixing
A full range of complete mounting hardware kits is available

Made to Order: Can't see what you're looking for? We can custom make mounting plates to your requirements. **Call 1800 GRIFCO**

■ Transmission Equipment

Sprockets, Platewheels, Drive Chains, Hauling Chains



Part No: S1212
Description: 12T 12B 31.75mm bore 8mm key
Comments: A full range of output shaft sprockets and platewheels are available



Part No: PS200
Description: Light commercial Roller Door drum plastic (pictured).



Part No: EFS43
Description: 43T 10B Easy-fit (Pat. pend.)
Comments: Designed for retro-fit applications on light industrial doors – no need to remove the door



Part No: DC10B
Description: 10B Chain length for drive connection (includes link)
Comments: A full range of simplex and duplex drive chain is available



Part No: HC5MM8
Description: Long link gal link hauling chain – 8 metre length

For more information and to view our complete range of installation and transmission accessories please visit our website: grifco.com.au

Battery Back-up



Part No: BBU1500 - Powder coated cabinet
Description: 1.5kW 3 Phase BBU system
Comments: Suitable for all Grifco 3 Phase openers up to 2.0Hp
 Automatic or Manual changeover
 Continuous battery status monitoring
Options: BBU1500S - Stainless steel cabinet



Part No: CGPS2KA
Description: 240 Volt Standby Power Unit UPS

Remote Controls



Part No: CG844
Description: Grifco 433Mhz 4 channel transmitter - Security+
Comments: Compatible with all Chamberlain Security+ receivers



Part No: CGK844
Description: Grifco 433Mhz 4 channel transmitter and mini receiver card kit
Comments: Includes 2 x transmitters (CG844) & 1 x mini receiver card (MRC2)
 Obstruction detection beams (PB008 or C-77) required for down function
 Suitable for eDrive electronic openers



Part No: CGK844PB
Description: Security Plus Remote and IR Beam Kit (Indoor use only)
Comments: Suitable for all eDrive electronic openers

Receivers



Part No: CSTAR250
Description: Multi function 250 user receiver
Comments: Flexibility of adding, deleting & blocking individual transmitters

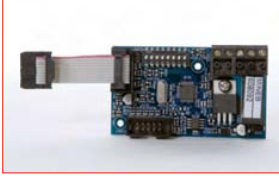


Part No: MRC2
Description: Grifco mini receiver card 433Mhz - Security+
Comments: Suits eDrive openers only

Logic Upgrades



Part No: EB1
Description: Elite expansion board for auxiliary device configuration
Comments: Multiple function inputs, complete with 4 relays
 Features Elite expansion board, cradle and high lid only
 Ideal for doors where special functionality featuring 2 or more external devices require interfacing (not for car parks).
 For full car park logic upgrade kit, see E21D41 below



Part No: MINEB
Description: Mini expansion board to add an array of features to your MCB
Comments: Quick "plug-in" installation
 Comes with one relay, configured by DIP switches
 See below for examples of MineB relay features
 - 24VDC to open or close
 - Dock leveller isolation signal
 - Door "closed" status
 - Signal when not closed
 - Signals while running
 - 24VDC input to disable
 - Custom behaviour (optional)



Part No: E21D41
Description: Elite Logic Upgrade Kit
Comments: Simple "plug-in" AUTO & AUTO/MANUAL modes (with ELITE kit)
 Auto close with user settable delay (0 to 300 seconds)
 Trigger input with variable door action sequences
 Connection to industry standard 6 pin radio receiver cards
 Variable obstruction behaviour settings
 Independent variable radio card response actions
 4 status relays to allow connection to external devices
 Emergency Services Open and Close inputs
Note: Voltage is irrespective
Recommended for carpark use

Safety Beams



Part No: PB008
Description: 8m reflective IR beam IP67
Comments: Pre-wired with 9m's of cable, complete with reflector



Part No: PB060
Description: 60m Send / Receive IR beam IP67
Comments: Non reflective



Part No: C77
Description: Chamberlain Send / Receive IR Beam (Indoor use only)
Comments: Complete with mounting brackets
 (Not suitable for MK1 or MK2 boards)