

REQUEST A QUOTE

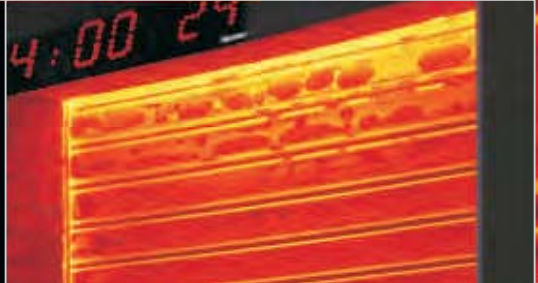
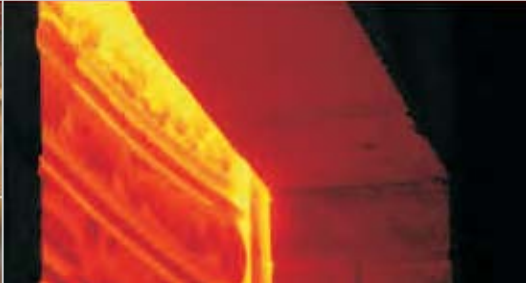
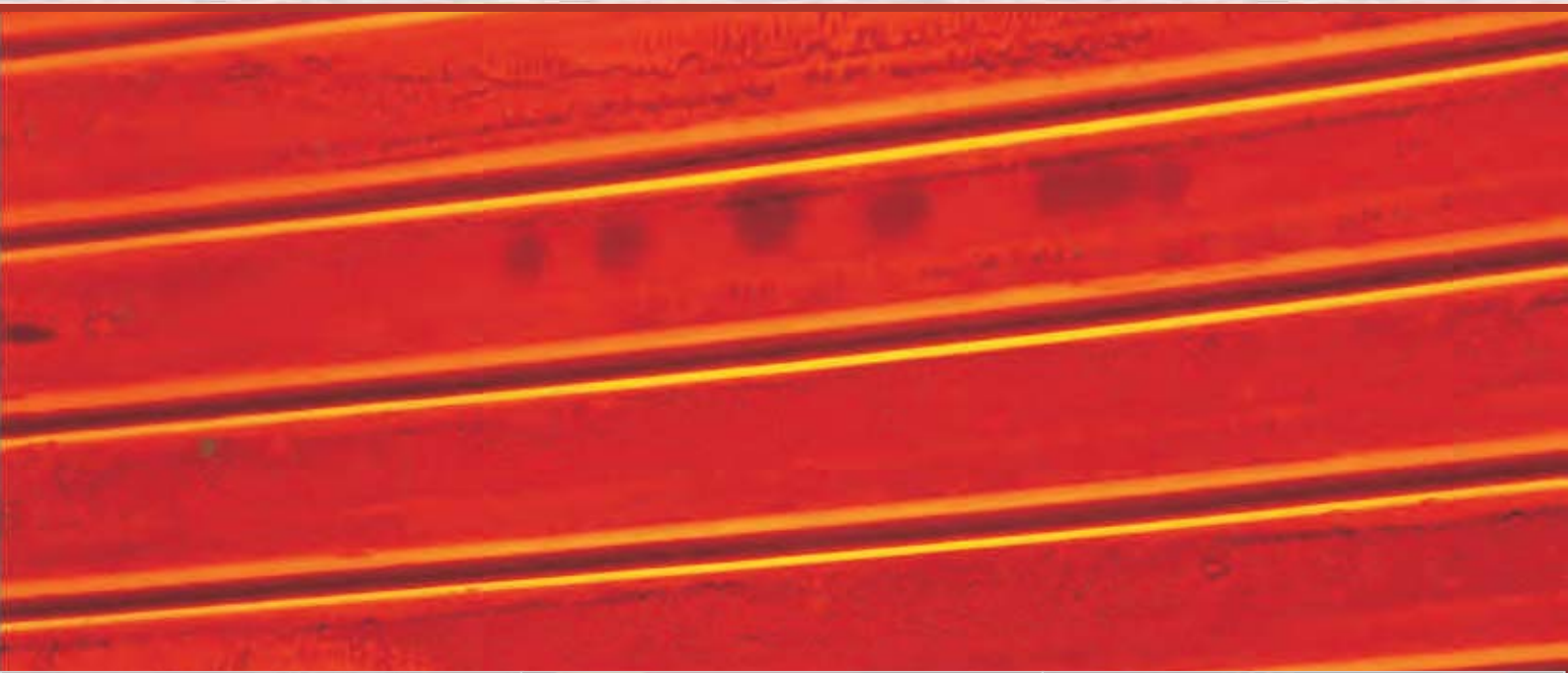


Anvil Industrial Doors
85 Christable Way, Landsdale,
Western Australia, 6065
PO Box 1767, Wangara WA 6947
Phone: (08) 9302 3355
Fax: (08) 9302 3399

Fire Shutter

Series 168 Fire Shutter Door System





Specifications

DOOR CURTAIN ASSEMBLY

105mm slat profile 1.413kg/mtr (Galvabond-0.95mm-G2-Z275-192mm slit) with cast clip on every second slat which secures curtain into guides.

HEAVY DUTY GUIDE ASSEMBLY

90mm deep with wall thickness of 2.95mm and formed lock rail running full length of guide to secure wind lock clips.

DRUM ASSEMBLY

The drum is manufactured from mild steel tube. The drum houses bearings counter balancing helical torsion springs, capable of producing sufficient torque to ensure ease of operation of the curtain from any position. With 1.0mm or 1.2mm steel slats with cast windlock clips every slat. Optional powder coat colours.

BOTTOM RAIL ASSEMBLY

Is of 65 x 65 x 5 Duragal E/angle fixed via 6mm rivets with centres not exceeding 450mm.

AUTO DESCENT FIRE SHUTTER OPERATOR

Grifco controlled descent mechanism triggered by either fusible link, magnetic hold release or both.

MOTOR OR MANUAL

Motor operation is a 1hp, 3 phase, 0.75kw Grifco (58001F) motor. Door settings are all controlled by the door controller (C10A).

TRANSMISSION DRIVE CHAIN

10B roller chain.

TRANSMISSION DRIVE SPROCKET

10b, 14 tooth sprocket with 31.75mm bore to fit on drive shaft of motor, Sprocket locked in with 8mm key way and 2 grub screws.

INSTALLATION REQUIREMENTS

Head-room 650mm, drive-side 450mm, tail-end 250mm.

Certificate of Test

No. 2097

*Copyright CSIRO 2009 ©
Copying or alteration of this report
without written authorisation from CSIRO is forbidden.

This is to certify that the element of construction described below was tested by the CSIRO Division of Materials Science and Engineering in accordance with Australian Standard 1530, Methods for fire tests on building materials, components and structures, Part 4-2005 on behalf of:

Anvil Metals Pty Ltd
19 Excellence Drive
WANGARA WA

A full description of the test specimen and the complete test results are detailed in the Division's sponsored investigation report numbered FSV 1331

Product Name: Anvil Metals Series 168 Roller Shutter Assembly

Description: The specimen comprised a steel roller shutter protecting an opening 2300-mm wide x 2300-mm high in a 230-mm thick masonry wall. The roller shutter curtain comprised interlocking, galvanised, steel roll-formed horizontal slats. The curtain slats were nominally 2440-mm long x 100-mm wide x 0.95-mm thick and had 10.5-mm thick cast steel end-clips, fixed with two 6.35-mm x 21-mm long steel rivets to each end of every alternate slat. The curtain overlapped the opening in the brick wall by nominally 70-mm on each side. The bottom rail of the curtain consisted of one 65-mm x 65-mm x 5-mm Duragal steel angle fixed through the bottom slat using 6-mm x 14-mm long steel rivets at nominal 300-mm centres. The vertical guides were mild steel 100-mm x 25-mm x 12.5-mm thick 'C' channel section. The roller drum assembly consisted of a black steel tube 168.3-mm O.D. with a wall thickness of 4.8-mm incorporating a steel solid axle, 35-mm in diameter supported at each end (measured distance of approximately 2620-mm) by a barrel bracket without being restrained in any way. The door was operated by using a hand chain through a reduction gearbox mounted on one end of the drum. The element of construction described above satisfied the following criteria for fire-resistance for the period stated.

| | | |
|---------------------|---|----------------------------|
| Structural Adequacy | - | not applicable |
| Integrity | - | no failures at 241 minutes |
| Insulation | - | 4 minutes |
| Radiation at 365-mm | - | 21 minutes |

and therefore for the purpose of Building Regulations in Australia, achieved a fire-resistance level (FRL) of - /240/0. The FRL is applicable for exposure to fire from either direction.

This certificate is provided for general information only and does not comply with the regulatory requirements for evidence of compliance.

Testing Officer: Chris Wojcik Date of Test: 23 October 2008.
Issued on the 9th day of January 2009 without alterations or additions.

Garry E Collins
Manager, Fire Testing and Assessments



CSIRO Materials Science and Engineering
14 Julius Avenue, Riverside Corporate Park, North Ryde NSW 2113 AUSTRALIA
Telephone: 61 2 9490 5444 Facsimile: 61 2 9490 5555



This document is issued in accordance with NATA's accreditation requirements







NOTES

A series of horizontal dotted lines for writing notes, spanning the width of the page.